



# Growth & Opportunity Impact Assessment

2017

**Summary of Findings:**  
Lorain County

FUND FOR  
**OUR**  
ECONOMIC  
FUTURE

WORKING TOWARD

GROWTH &  
OPPORTUNITY



# Impact Assessment: Overall Findings

## Job Creation

- Growth in the traded sector of the economy is critically important for our region’s economic health.
- Job creation grantmaking outcomes exhibit the Fund’s strategic focus on growing this sector.

## Job Preparation

- Fund grantees are helping to create jobs for residents with a variety of educational attainment backgrounds. These jobs tend to be in the traded sector and most pay living wages.
- To fully realize the expanded opportunity that these jobs represent, we must remove barriers to employment and increase access to support services.

## Job Access

- The geographic patterns of growth, both within the Fund’s portfolio of outcomes and across the broader economy, create transportation and access challenges for residents.



# Impact Assessment: Lorain County Findings

## Job Creation

- Grantee-supported growth is most effective when it aligns with local economic and leadership assets; more can be done to help connect regional intermediaries in Lorain County.

## Job Preparation

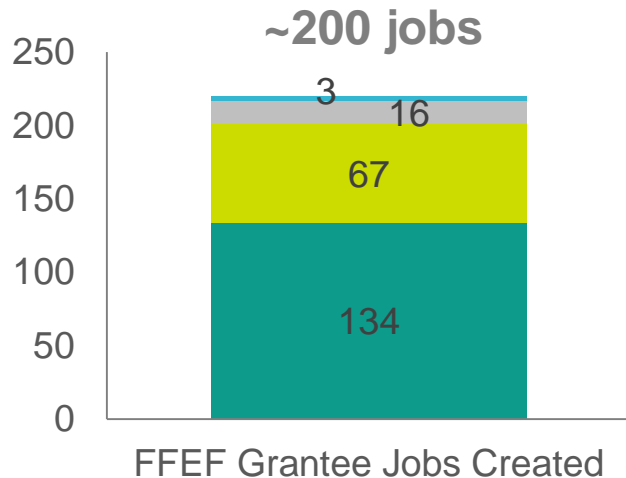
- Lorain County's fastest growing office and industrial industries tend to pay living wages. Growing service sectors are very accessible, but often pay below living-wage levels.
- Grantee-supported growth exhibits a similar range of educational attainment requirements and consistently pays above a living wage.

## Job Access

- Lorain County faces similar job access challenges as other parts of the region.

# Opportunity to better connect regional intermediaries in Lorain Cty

**FFEF Job Creation Grantees:**  
Lorain County Jobs Created 2010-2016



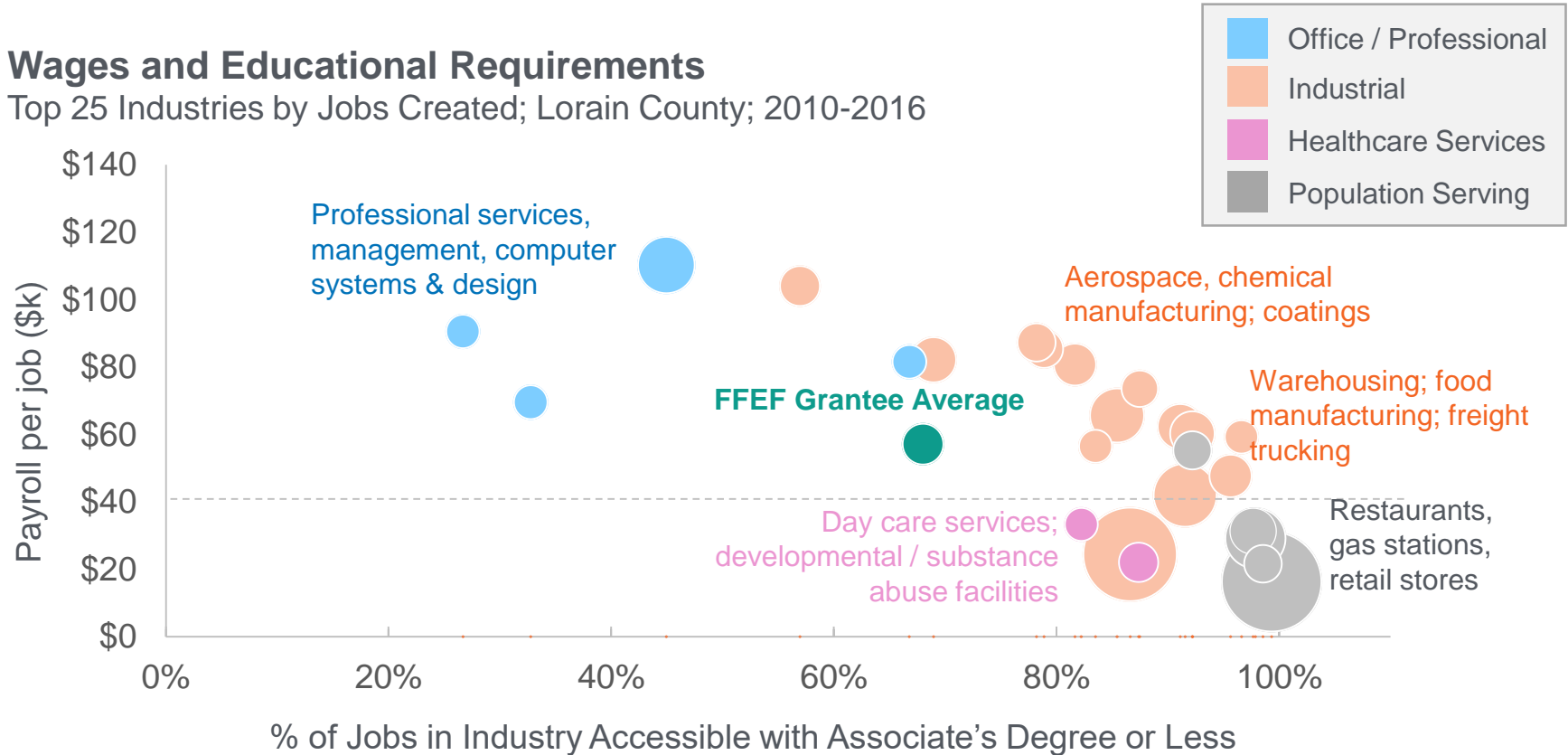
■ MAGNET      ■ BioEnterprise  
■ JumpStart & JEN   ■ TNEO

- These are **good, catalytic jobs!**  
More is better
- Counties that have benefitted most are those with local strategy in place
- **What local strategies could increase benefit from regional EDOs?**
  - Structural barriers? (site availability)
  - Org. capacity? (respond to RFP)
  - Strategic alignment?

# Office and industrial sectors creating 'accessible,' living-wage jobs

## Wages and Educational Requirements

Top 25 Industries by Jobs Created; Lorain County; 2010-2016

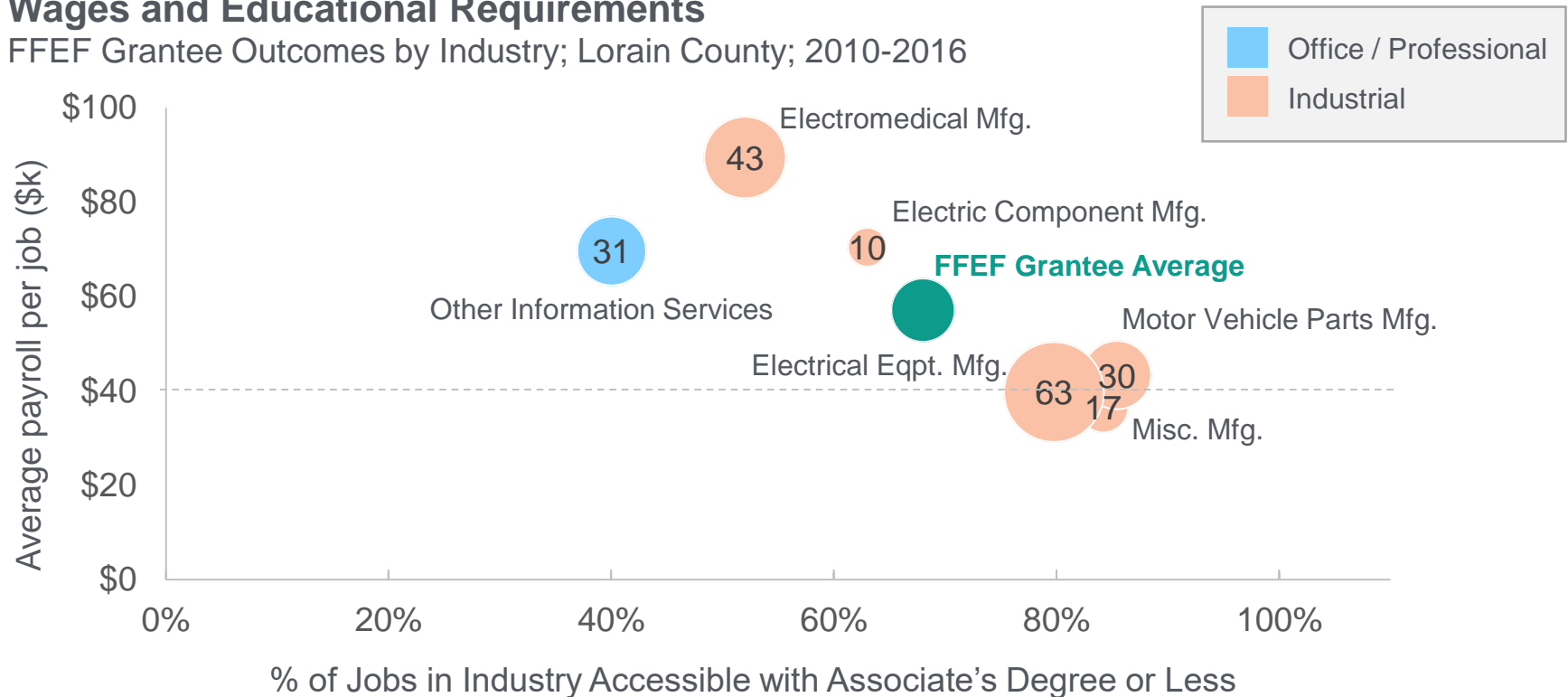


Source: EMSI

# The same is true of Fund job creation grantee outcomes

## Wages and Educational Requirements

FFEF Grantee Outcomes by Industry; Lorain County; 2010-2016



Source: Average educational attainment requirements by industry from EMSI; average salary per job as reported by grantees based on jobs and payroll

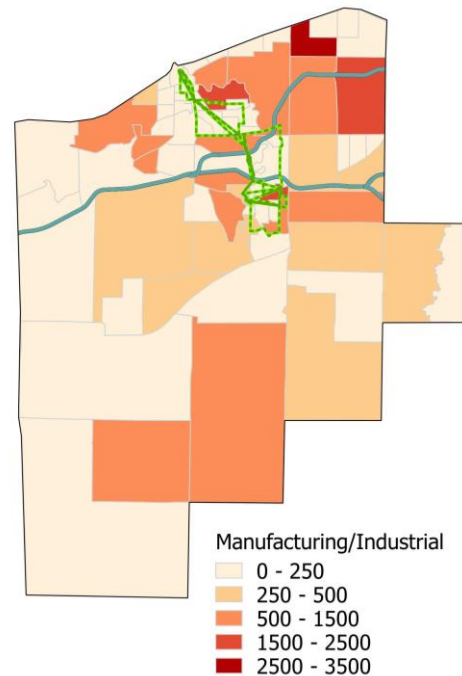
# Limited transit access exacerbates job access challenge

## Office & Professional Jobs (8k)

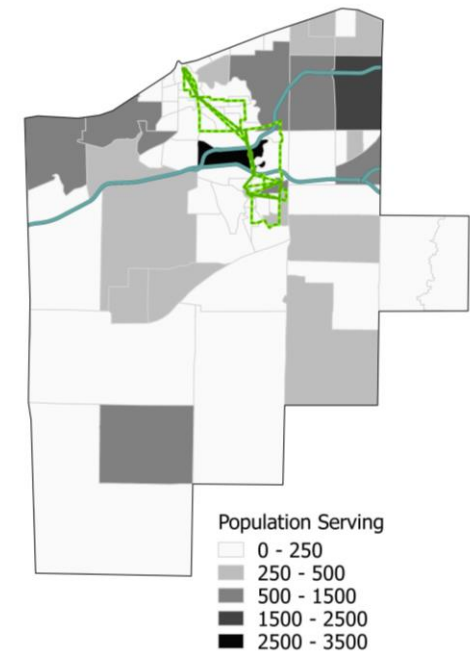
— Lorain County Transit Route  
— Interstate



## Manufacturing & Other Industrial Jobs (27k)



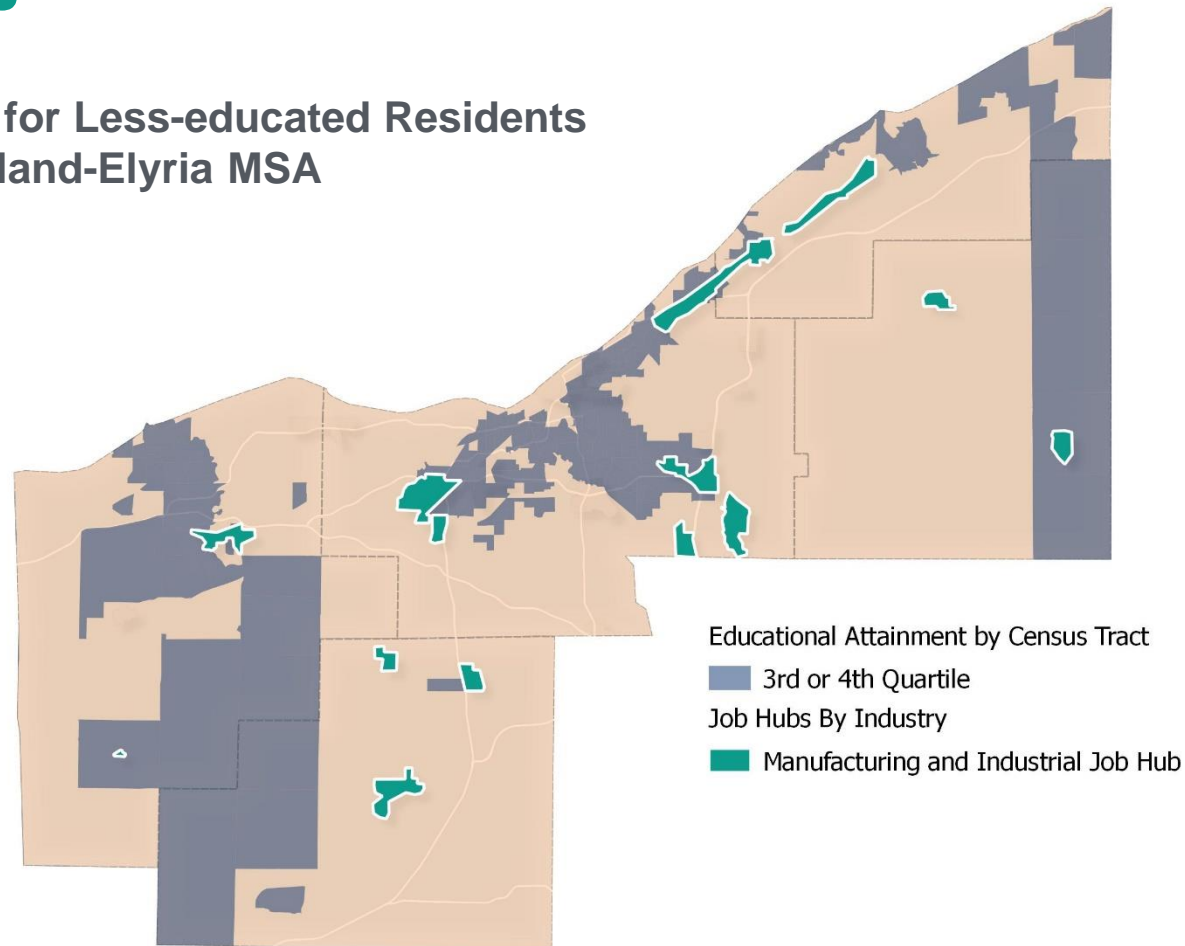
## Accommodation, Food & Retail Jobs (20k)



Source: Census LEHD Data 2014

# Many less-educated residents live far from job hubs with 'accessible' jobs

## Job Access for Less-educated Residents in the Cleveland-Elyria MSA



Source: 2015 ACS: Low Educational Attainment Census tracts are in 3<sup>rd</sup> or 4<sup>th</sup> quartile of Census tracts in terms of share of residents with an associate's degree or less (equating to 81.5 percent of residents with associate's degree or less)