



Growth & Opportunity Impact Assessment

2017

Summary of Findings:
Cuyahoga County

FUND FOR
OUR
ECONOMIC
FUTURE

WORKING TOWARD

GROWTH &
OPPORTUNITY



Impact Assessment: Summary of Findings

Job Creation

- Growth in the traded sector of the economy is critically important for our region’s economic health.
- Job creation grantmaking outcomes exhibit the Fund’s strategic focus on growing this sector.

Job Preparation

- Fund grantees are helping to create jobs for residents with a variety of educational attainment backgrounds. These jobs tend to be in the traded sector and most pay living wages.
- To fully realize the expanded opportunity that these jobs represent, we must remove barriers to employment and increase access to support services.

Job Access

- The geographic patterns of growth, both within the Fund’s portfolio of outcomes and across the broader economy, create transportation and access challenges for residents.



Impact Assessment: Cuyahoga County Findings

Job Creation

- Grantee-supported growth in Cuyahoga County has been relatively evenly distributed between industrial, office and professional industries—all of which fall within the traded sector.

Job Preparation

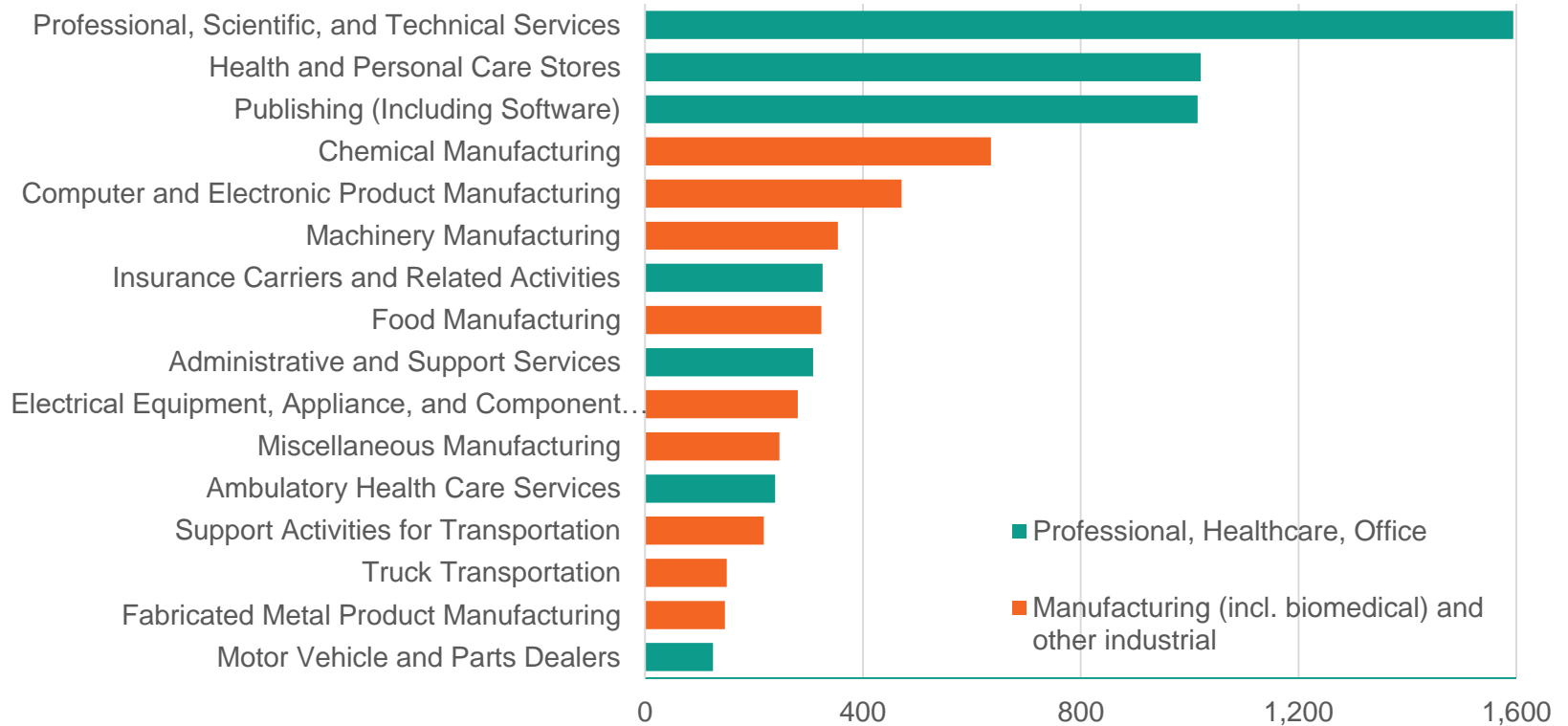
- Cuyahoga County's fastest growing office and industrial industries tend to pay living wages. Growing service sectors are very accessible, but often pay below living-wage levels.
- Grantee-supported growth exhibits a similar range of educational attainment requirements and consistently pays above a living wage.

Job Access

- Cuyahoga County faces similar job access challenges as other parts of the region.

Job Creation grantee split between professional and industrial jobs

Job Creation Grantee Outcomes: Cuyahoga County
2010-2016; by NAICS 3 Digit Industry¹



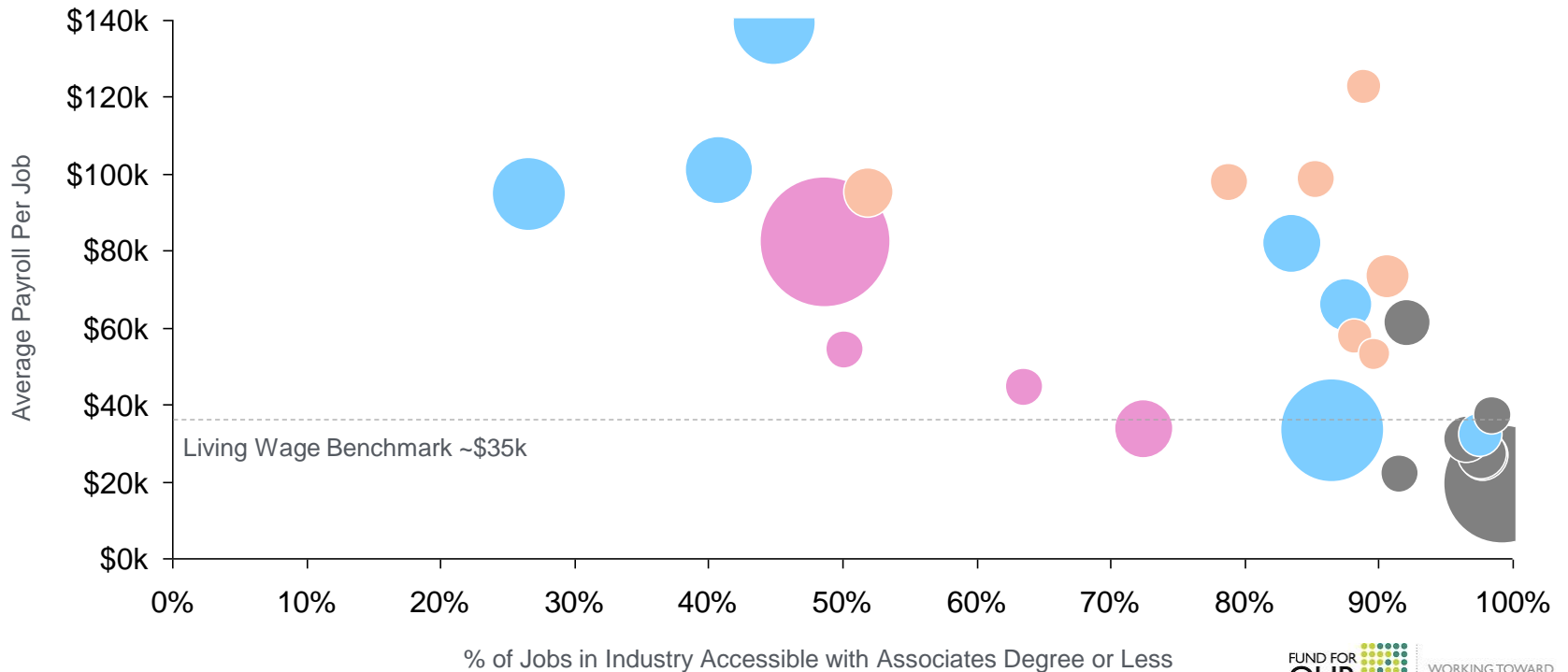
1: Grantee outcome industries reported by grantees, subject to change, aggregated to 3-digit NAICS level

Except service sector, all sectors are adding accessible, living-wage jobs

Wages and Educational Requirements

Top 25 Industries by Jobs Created; Cuyahoga County; 2010-2016

● Health care ● Service ● Office / Professional ● Industrial



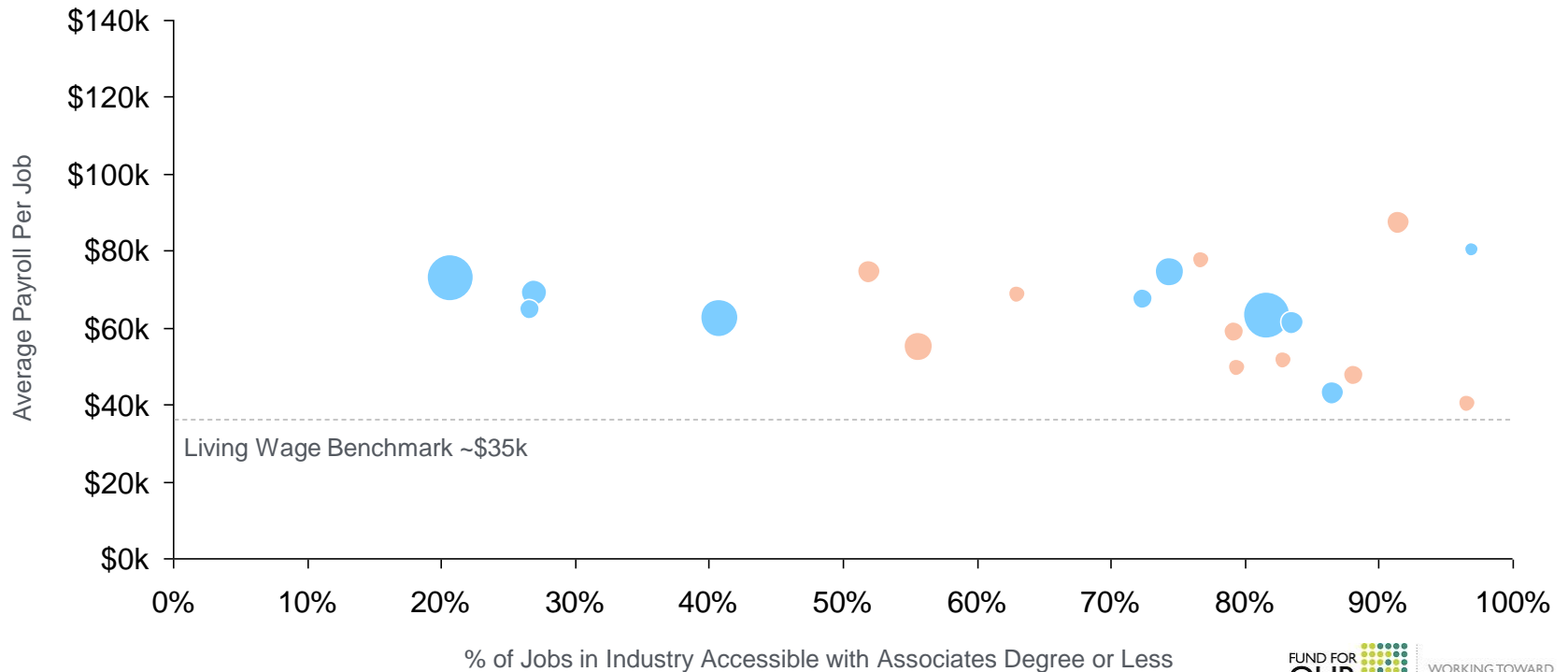
Source: EMSI

Grantees supporting living-wage jobs with diverse educational req.'s

Wages and Educational Requirements

Grantee outcomes aggregated by industry; Cuyahoga County; 2010-2016

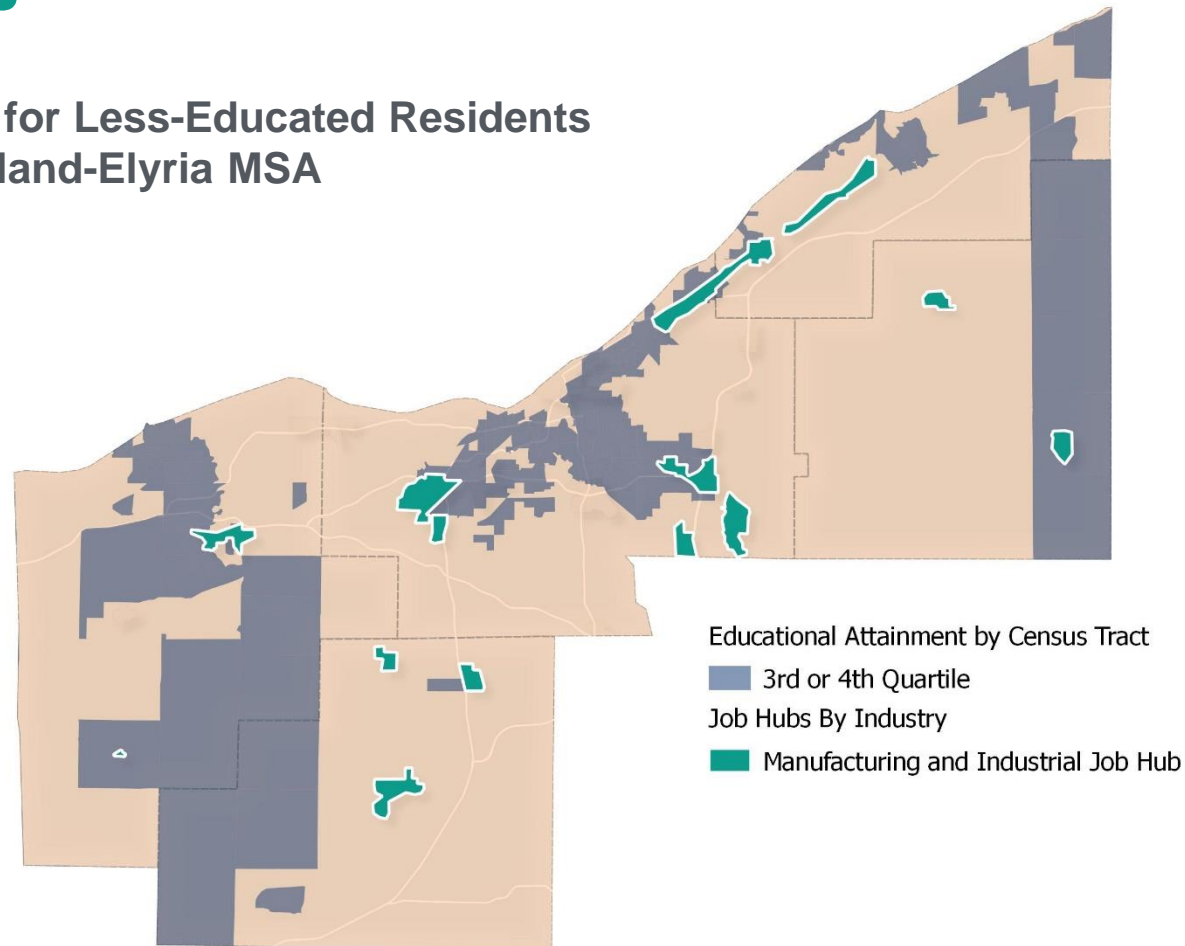
● Office / Professional ● Industrial



Source: Average educational attainment requirements by industry from EMSI; average salary per job as reported by grantees based on jobs and payroll

Many less-educated residents live far from job hubs with 'accessible' jobs

Job Access for Less-Educated Residents in the Cleveland-Elyria MSA



Source: 2015 ACS: Low Educational Attainment Census tracts are in 3rd or 4th quartile of Census tracts in terms of share of residents with an associate's degree or less (equating to 81.5 percent of residents with associate's degree or less)